



**MILES ESTATE AGENTS**

**24 Four Acre Mead Bishops Lydeard  
Taunton TA4 3NW £365,000**



**\*\*NO ONWARD CHAIN\*\*** A well presented and spacious, extended 4 bedroom split level detached house set in lovely mature gardens in this ever popular Quantock village. Large corner plot with scope for more parking and useful large timber built shed. Refitted kitchen, bathroom and en suite, generous sitting room, study area, conservatory, integral garage and off road parking - early viewing highly recommended. Freehold. Council Tax Band D. EPC : C.

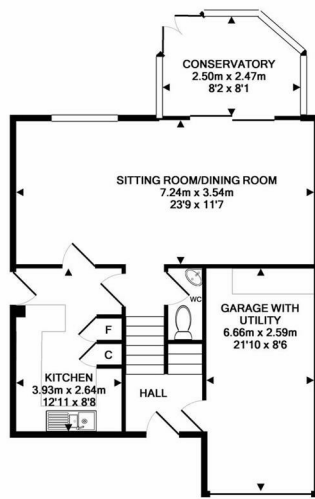




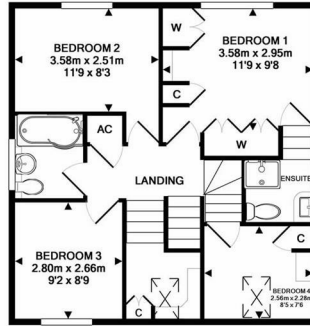
## Features:

- Entrance hall
- Spacious sitting / dining room
- Lovely refitted kitchen
- Cloakroom
- Master bedroom with refitted en suite
- 3 further good size bedrooms
- Refitted family bathroom
- Enclosed mature gardens
- Single garage & off road parking
- Freehold
- Council Tax Band D
- EPC : C



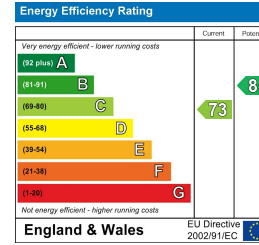


GROUND FLOOR  
APPROX. FLOOR  
AREA 64.4 SQ.M.  
(694 SQ.FT.)



1ST FLOOR  
APPROX. FLOOR  
AREA 53.4 SQ.M.  
(576 SQ.FT.)

TOTAL APPROX. FLOOR AREA 117.8 SQ.M. (1269 SQ.FT.)  
Made with Metropix ©2019



Viewings strictly through the selling agents:

**Miles Estate Agents**

2 Piffin Lane, Bishops Lydeard, Taunton,  
Somerset, TA4 3AS

Tel: 01823 470 500

lydeard@milesestateagents.co.uk

www.milesestateagents.co.uk



**rightmove** 

**OnTheMarket.com** 

**MILES ESTATE AGENTS**

